

**Franklin 95A Retrofit (Blue Control Box) by
AFM Engineering, Inc.**

The 95A retrofit kit consist of the following:

1. A Nolatron Anti tie down control.
2. Mounting Bracket.
3. 11 pin plug.
4. New Setup Switch
5. Mounting hardware.
6. Four loose wires that will be connected during the installation process.



Installing the 95A retrofit package (Blue Control Box) should take about one hour.

Step 1:

Disconnect the control box from it's power source. Remove the four screws form the box bottom. Remove the three screws from the box top. Slide the control box out of the box top

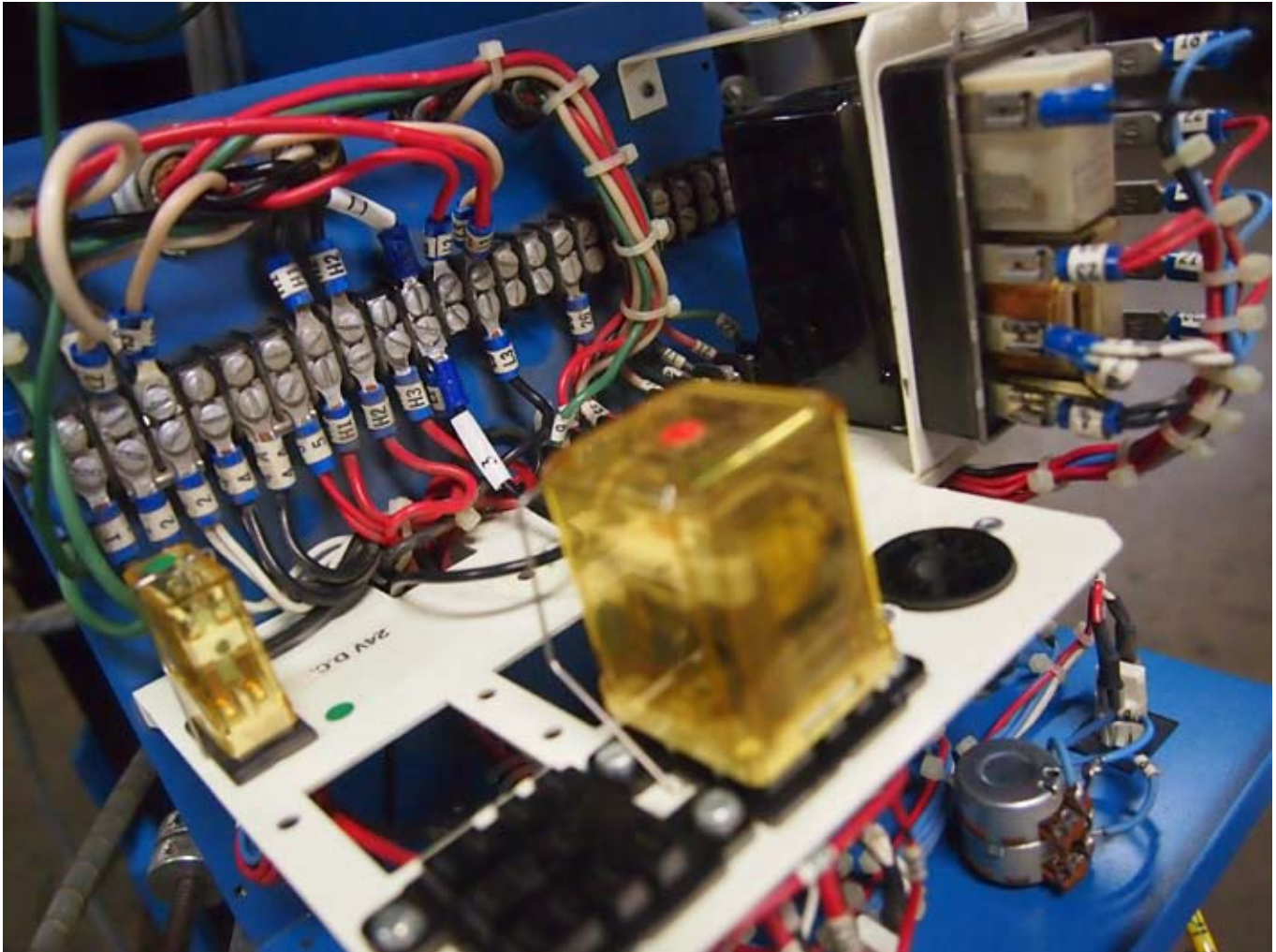


Figure 1

Installing the 95A retrofit package (Blue Control Box)

Step 2:

Remove 24 vdc relay figure 2. Remove screw from 95A keeper. Remove Keeper and 95A figure 3 and 4.

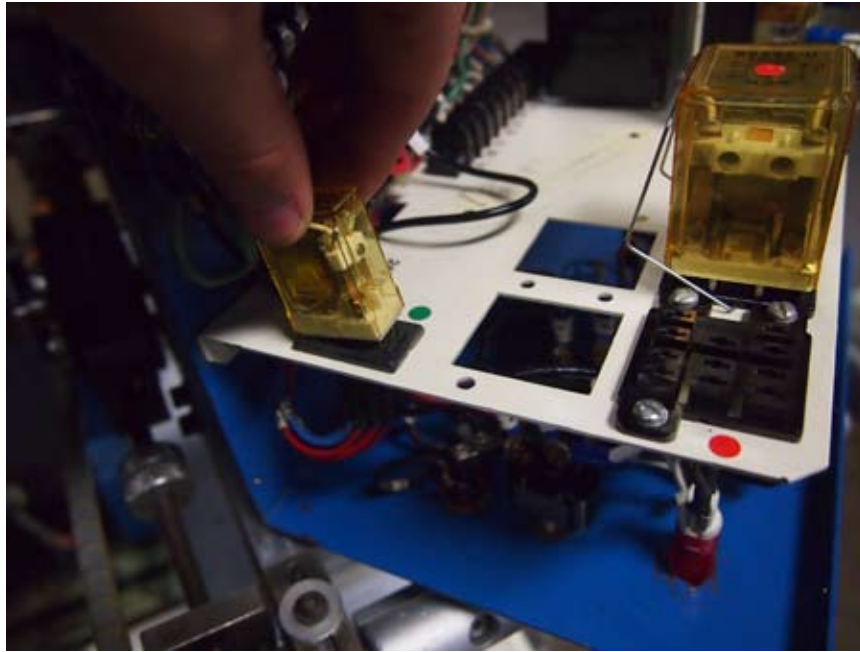


Figure 2

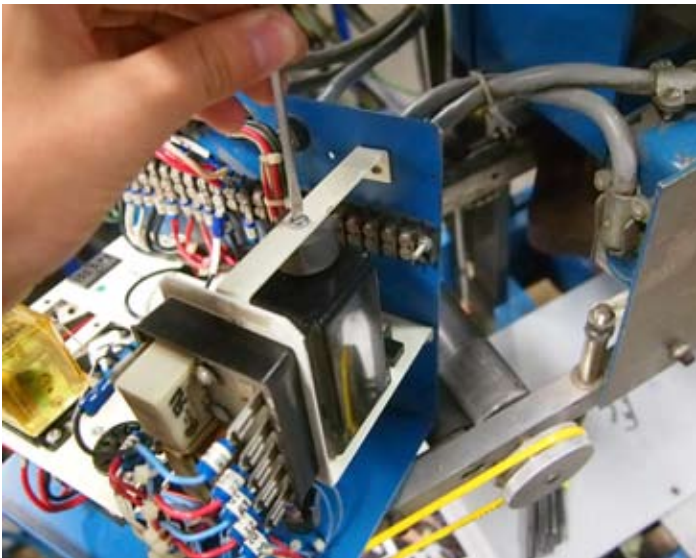


Figure 3

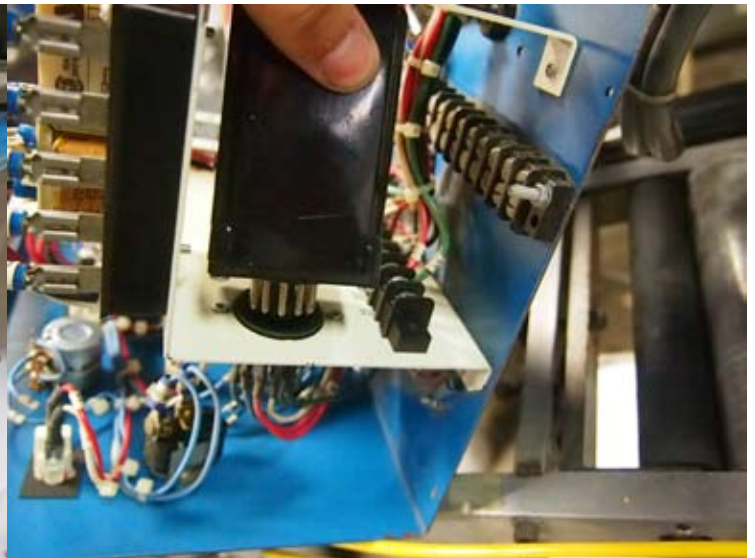


Figure 4

Installing the 95A retrofit package (Blue Control Box)

Step 3: Remove wire number 11 and black wire number 12 from terminal black next to 95A timer (before figure 5 after figure 6). Put both wires you just removed on any open terminals to terminal block on bottom of box. Then connect wire numbers 11 and 12 from retrofit kit to the same wires number on the block (Figure 7)

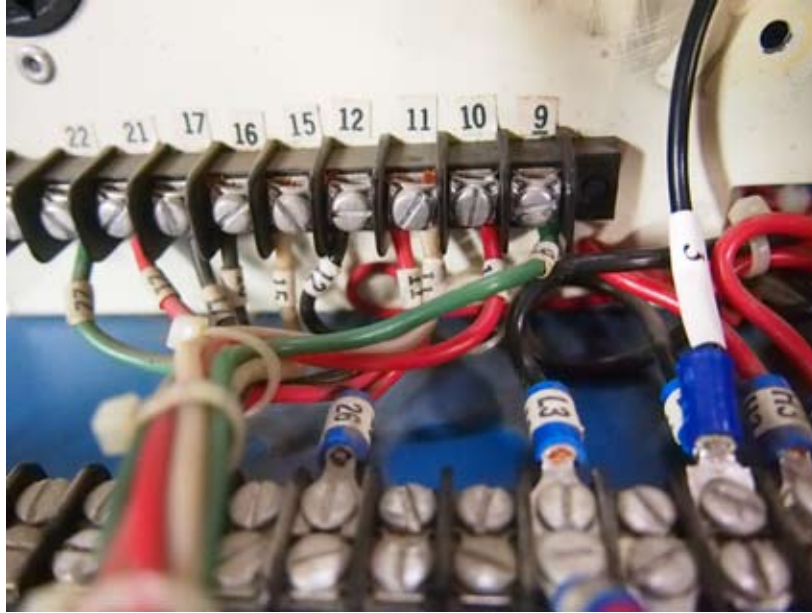


Figure 5

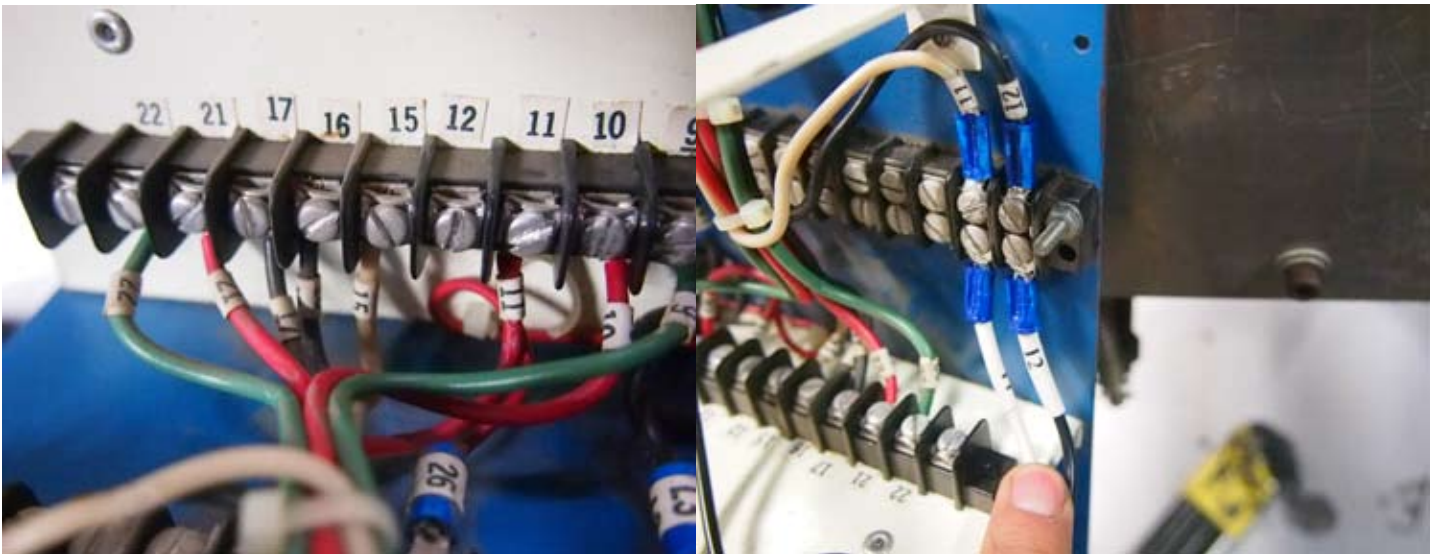


Figure 6

Figure 7

Installing the 95A retrofit package (Blue Control Box)

Step 4: Connect wire number 5 in retrofit to terminal 5 on box bottom terminal strip (Figure 8). Connect wire number 17 to terminal 17 on terminal block next to 11 pin plug (Figure 9). Bend the wire up so you can insert the 11 pin plug. Remove SETUP switch from front panel (figure 10) Clip wire number 9 and 8 at SETUP switch (figure 11).



Figure 8

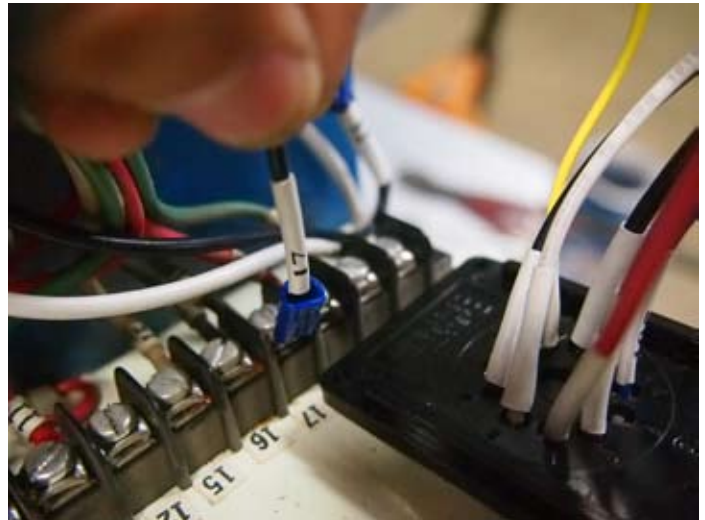


Figure 9



Figure 10



Figure 11

Installing the 95A retrofit package (Blue Control Box)

Step 5: Strip wire number 8 and 9 then twist them together and put a wire nut on them (Figure 11). Install new SETUP switch in front panel (Figure 12). Remove screws from temperature controller (Figure 13) and install mounting bracket screws (Figure 14).



Figure 11



Figure 12

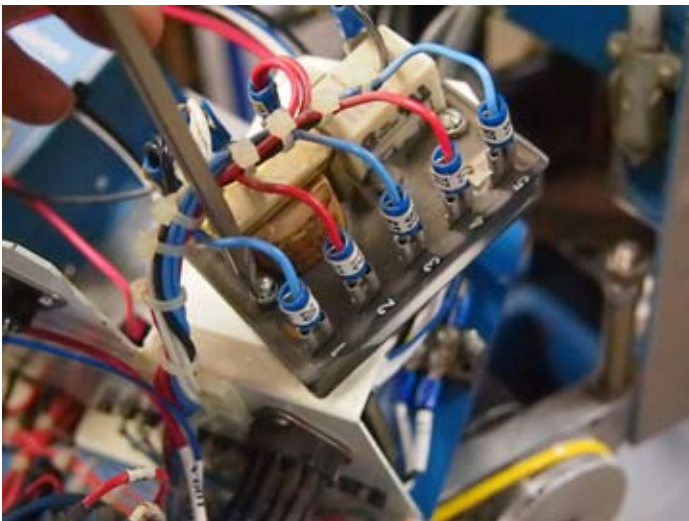


Figure 13

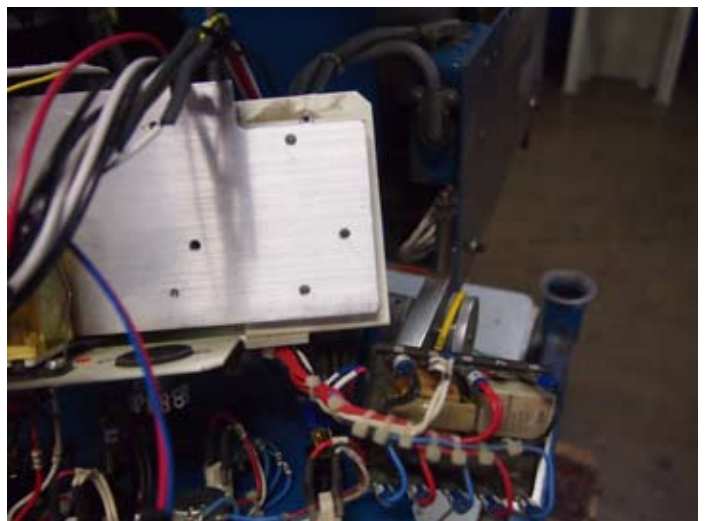


Figure 14

Installing the 95A retrofit package (Blue Control Box)

Step 6: Mount Temperature controller with longer screws through the mounting bracket (Figure 15). Install and tighten nuts to hold bracket in place. (Figure 16). Put the control box back into the cover and install the screws. Run the **Daily Checkout** to make sure everything is correct.

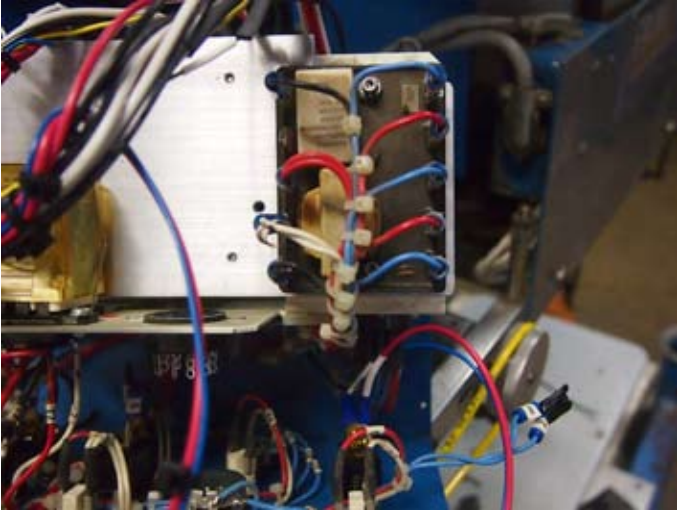


Figure 15

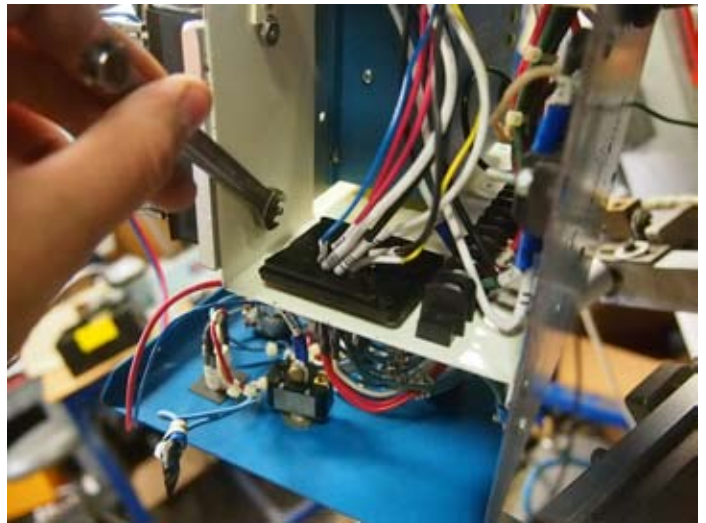


Figure 16

Daily Checkout

Two-Hand control Device Operation

1. Turn the power switch ON and allow it to heat to temperature.
2. Turn the head switch to ON.
3. Place your left index finger into the left optical touch button.
4. Wait one or two seconds, then place your right index finger into the right optical touch button. The HEAD DESCENDING light should not turn on and the machine should not cycle.
5. Remove both hands from the optical touch buttons.
6. Place your index finger of your right hand into the right optical touch button.
7. Wait one or two seconds, then place your left index finger into the left optical touch button.
8. The HEAD DESCENDING light should not come on and the machine should not cycle.
9. Place your left index finger on the left optical touch button and your right index finger on the right optical touch button at the same time. The HEAD DESCENDING light should turn on and head should lower.

True Dwell Operation

1. Turn power switch ON and allow it to heat to temperature.
2. Turn head switch ON
3. Place your left index finger into the left optical touch button and your right index finger into right optical touch button at the same time. The HEAD DESCENDING light should come on and the head should start descending.
4. Before the head lowers completely remove your right index finger from the right optical touch Button. The HEAD DESCENDING light should turn off and the head should rise up.
5. Place your left index finger into the left optical touch button and your right index finger into right optical touch button at the same time. The HEAD DESCENDING light should come on and the head should begin lowering.
6. Before the head lowers completely remove your left index finger from the left optical touch button. The HEAD DESCENDING light should turn off and the head should rise up.
7. Place your left index finger into the left optical touch button and your right index finger into right optical touch button at the same time. The HEAD DESCENDING light should turn on and the head should start lowering.
8. Hold both fingers on the buttons until the head is completely lowered. Watch the HEAD TIMER lowered for the time set on THE HEAD TIMER.

Head Switch Operation

1. Turn the power switch ON and allow it to heat to temperature.
2. Turn the head switch to OFF.
3. Place your left index finger into the left optical touch button and your right index finger into the right optical touch button at the same time. The HEAD DESCENDING light should not begin lowering.
4. Turn Head Switch to ON.
5. Put your left index finger into the left optical touch button and your right index finger into the right optical touch button at the same time. The HEAD DESCENDING light should turn on and the head should begin lowering.

NOTE: If any of the above tests fail as described DO NOT operate the machine. Notify the person designated by your employer that the machine needs service.